

THE ARTISAN
COLLECTION BY
REPRIME

FRONT OF HOUSE FASHION

VOLUME SIX

SERVE IN STYLE

**THE RECIPE FOR
A SUCCESSFUL
UNIFORM**

APRONS
Functional and Stylish

SHIRTS
Tailored to Your Look

CHEFSWEAR
Ready for Any Kitchen

UNLOCK NEW OPPORTUNITIES

Explore how our versatile garments can help businesses stand out, whether in hospitality, retail, events, beauty, or beyond! We're here to help decorators and resellers like you discover new markets and opportunities to offer our high-quality, customisable uniforms

From aprons and shirts to chefswear, all our garments are designed to be effortlessly branded and decorated. By choosing the right colour palette and logo placement, you can help your clients create a cohesive, professional identity that makes a lasting impression—no matter the industry.

Whether you're outfitting a restaurant team, retail staff, or a beauty salon, we've curated a collection of standout styles and combinations to inspire you. Simply select the styles that align with your client's brand, and build uniform sets that will truly stand out.



CONTENTS



Aprons

7



Chefswear

24



Shirts

32

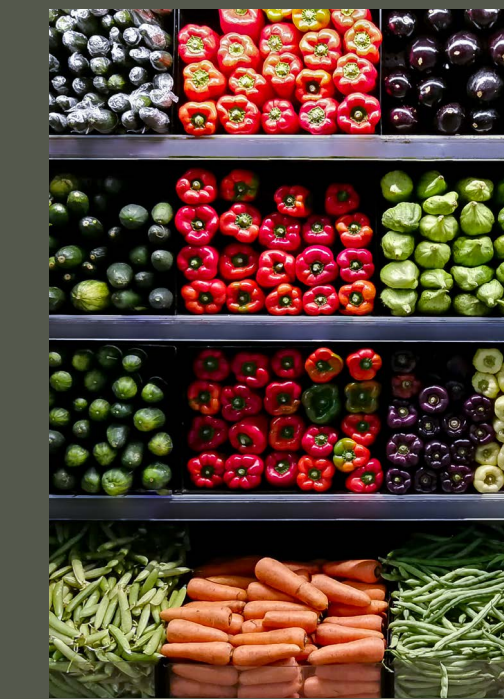
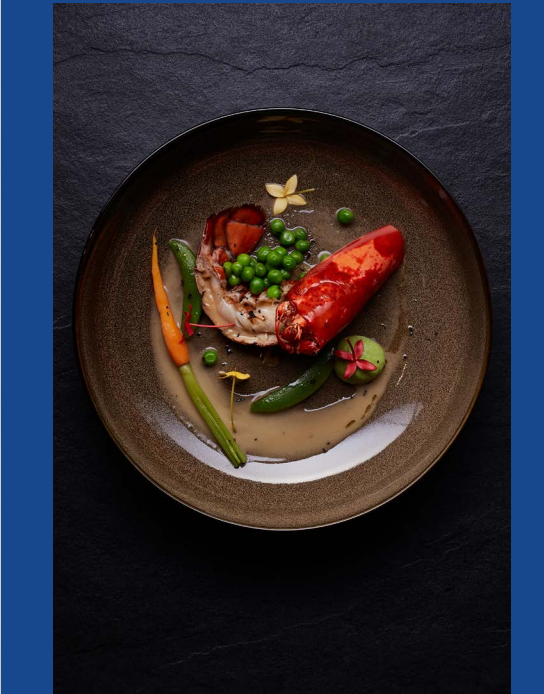
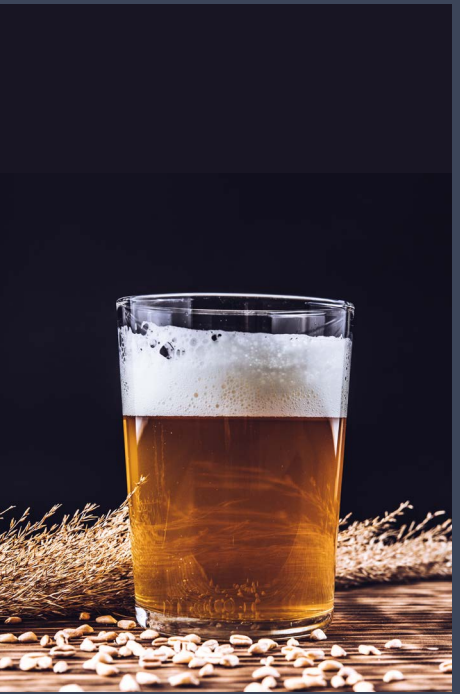


APRON BRANDING

We are passionate about crafting aprons that go beyond just being protective garments. For us, our aprons symbolise creativity, versatility, and style. Which is why, our aprons are designed for a wide range of uses, extending far beyond the kitchen or restaurant setting.

Whether you're looking to create stylish uniforms, enhance your brand's identity, or add a touch of sophistication to any workspace, our aprons are the perfect solution for any industry. Designed to be decorated, our aprons can be embroidered and heat transferred to bring any branding to life!

Explore the possibilities. You might be surprised by the variety of settings where our aprons can make an impact—whether it's in hospitality, retail, beauty, art studios, or even the promotional market.



Artwork for illustrative purposes. Supplied blank.

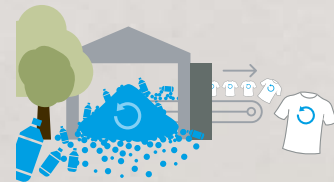
SUSTAINABILITY JOURNEY

BETTER PACKAGING



Since 2020 we have reduced single unit plastic packaging and increased the amount of recycled content within these units.

REUSING PLASTICS



The recycled polyester in our garments comes from pre- and post-consumer materials. We also use post-consumer recycled nylon.

RESPONSIBLE COTTON SOURCING



Where we can, we source cotton that has been grown with more care for the environment.

COMMUNITY ENGAGEMENT



In partnership with the Jaago Foundation, we sponsor a class of 40 children at the Jaago School Banani Branch in Bangladesh.

SOCIAL COMPLIANCE



The people who make our garments work in factories that are audited to internationally recognised ethical standards which allows us to have transparency on our supply chain.

ETHICAL, SOCIAL AND ENVIRONMENTAL CREDENTIALS



We are proud members

We partner with Better Cotton to improve cotton farming globally. Better Cotton's mission is to help cotton communities survive and thrive, while protecting and restoring the environment.



COMPLIANT

We are tested

Proposition 65 is a California law requiring businesses to warn about chemicals that can cause cancer, birth defects, or reproductive harm. It ensures people are informed about potential exposures from products and environments.



CPSIA compliance indicates that a product has been tested and meets the safety standards established by the Consumer Product Safety Commission in the United States, to protect consumers, especially children, from potential hazards associated with the use of the product.



Certified by Control Union
CB-CUC-119398



Certified by Control Union
CB-CUC-119398

We are certified

Styles that contain at least 95% organically grown material are certified to the Organic Content Standard 100. Styles that contain between 5-94% organically grown material are certified to the Organic Content Standard Blended.



Certified by Control Union
CB-CUC-119398



Certified by Control Union
CB-CUC-119398

Styles that contain at least 50% recycled material are certified to the Global Recycled Standard. Styles that contain between 5 - 94% recycled material are certified to the Recycled Claim Standard Blended.



Organic

Certified by Control Union
CB-GOTS-CUC-03-119398

Additionally, our GOTS certification ensures that the fabrics we use meet rigorous environmental and social criteria throughout the entire supply chain.



STANDARD 100

Product safety

Styles that display the OEKO-TEX® STANDARD 100 logo have been tested to provide the confidence that each product has been made to a high standard of product safety.



Ethical Production

Our manufacturing facilities and supply chains are audited by some of the world's leading organisations. This allows us to monitor and assess workplace standards by working closely with our suppliers to encourage continuous improvements.

CANVAS APRON

NEW

RP181

RP181 'ARTISAN'S CHOICE' DOUBLE POCKET CANVAS APRON

- 60% Cotton 40% Recycled Polyester Canvas
- Heavyweight canvas bib apron with rounded edges
- Metal eyelets supports knotted neckband
- Wear as a full bib or half waist apron
- 33.8" L x 28.3" W

SIZES: One size

COLOURS: Black, Natural, Olive, Dark Grey



Can be worn as a waist apron



Rounded edges create soft lines



Certified by Control Union
CB-CUC-119398



Black Dark Grey Olive Natural

Artwork for illustrative purposes. Supplied blank.

ORGANIC BIB APRON

RP102 ORGANIC BIB APRON

- 100% Organic Cotton. 7.1oz
- Absorbent cotton twill
- Self-fabric ties
- Self-fabric neckband
- 34.2" L x 23.6" W

SIZES: One size

COLOURS: Black, Navy, Dark Grey, Silver, Natural, Khaki, Burgundy, Red

RP102



Organic

Certified by Control Union
CS-GOTS-CUC-02-1119298



OEKO
TEX
STANDARD
100
11-65675
Shirley



RP121

'BARLEY' CONTRAST STITCH



Black/Charcoal

Navy/Camel

Olive/Chestnut

Khaki/Brown

RP121 'BARLEY' CONTRAST STITCH RECYCLED BIB APRON

- 65% Recycled Polyester, 35% Cotton - 5.8 oz
- Recycled polyester from post-consumer plastic
- Contrast stitching
- Adjustable antique brass buckle on neckband
- Side pockets and centre zipped pocket
- Eyelet and rivet detail
- 33.8" L x 28.3" W

SIZES: One size

COLOURS: Black/Charcoal, Khaki/Brown, Navy/Camel, Olive/Chestnut



Contrast stitching



Eyelet and rivet details

'COLOURS'
RECYCLED

**RP154 'COLOURS'
RECYCLED POCKET BIB APRON**

- Colours: 65% Recycled Polyester, 35% Cotton - 5.8 oz
- Denims: 70% Cotton, 30% Recycled Polyester- 8 oz
- Adjustable buckle on the neckband for height adjustment
- 33.8" L x 28.3" W

SIZES: One size

COLOURS: Black, White, Navy, Royal, Red, Natural, Dark Grey, Bottle, Steel, Silver, Khaki, Burgundy, Hot Pink, Orange, Purple, Turquoise

Black	Navy
Dark grey	Silver
Steel	Khaki
Blue denim	White
Royal	Burgundy NEW
Red	Hot pink NEW
Natural	Orange NEW
Black denim	Purple NEW
Bottle	Turquoise NEW
Indigo denim	Grey denim NEW



IN ACCORDANCE WITH THE REVISED LEGISLATION FOR CAPACITY MEASURES (INTOXICATING LIQUOR) REGULATIONS, THIS ESTABLISHMENT NOW SELLS WINE BY THE GLASS IN QUANTITIES OF 125ML - 175ML - 250ML SMALL GLASS MEDIUM GLASS LARGE GLASS

WEIGHTS & MEASURES ACT
UNLESS SUPPLIED PRE-PACKED GIN - VODKA - WHISKY - RUM ARE OFFERED FOR SALE OR SERVED ON THESE PREMISES IN QUANTITIES OF TWENTY-FIVE MILLILITRES OR MULTIPLES THEREOF



'COLOURS' RECYCLED

20
COLOURS

Black	Silver
Dark grey	Purple
Steel	Hot pink
Blue denim	Burgundy
Black denim	Red
Grey denim	Orange
Indigo denim	Khaki
Royal	Natural
Turquoise	White
Navy	Bottle green

RP150 'COLOURS' RECYCLED BIB APRON

- Colours: 65% Recycled Polyester, 35% Cotton - 5.8 oz
- Denims: 70% Cotton, 30% Recycled Polyester- 8 oz
- Adjustable buckle on the neckband for height adjustment
- Self-fabric ties
- Easycare & high temperature wash
- 34"L x 28"W

SIZES: One size

COLOURS: Black, Dark Grey, Steel, Blue Denim, Black Denim, Grey Denim, Indigo Denim, Royal, Turquoise, Navy, Silver, Purple, Hot Pink, Burgundy, Red, Orange, Khaki, Natural, White, Bottle Green



'COLOURS' YOUTH RECYCLED APRON

RP149

RP149 YOUTH RECYCLED APRON

- 65% Recycled Polyester, 35% Cotton - 5.8 oz
- Safety release mechanism on neckband
- 18.8" L x 24.4" W

SIZES: One size

COLOURS: Black, Dark Grey, Navy, White, Royal, Turquoise, Purple, Hot Pink, Red, Natural



Safety release mechanism



Black	
Dark grey	
Navy	
White	
Royal	
Turquoise	
Purple	
Hot pink	
Red	
Orange	NEW
Natural	
Burgundy	NEW
Bottle green	NEW



RP126

RP125

JEANS STITCH DENIM APRONS

RP126 JEAN STITCH BIB APRON

- 70% Cotton, 30% Recycled Polyester - 8oz
- 34" L x 28" W
- Contrast stitching
- Antique brass and silver rivets
- Four pocket compartments
- 42" self fabric ties
- Adjustable buckle on neckband for height adjustment

SIZES: One size

COLOURS: Black Denim, Indigo Denim



90cm self fabric ties

Buckle on neckband



Black denim

Indigo denim

RP125 JEAN STITCH WAIST APRON

- 70% Cotton, 30% Recycled Polyester - 8oz
- 16" L x 31" W
- Contrast stitching
- Antique brass and silver rivets
- Four pocket compartments
- 42" self fabric ties

SIZES: One size

COLOURS: Black Denim, Indigo Denim



Black denim

Indigo denim



Black denim

Indigo denim

DENIM TOTE BAG

RP998 DENIM TOTE BAG

- 70% Cotton, 30% Recycled Polyester - 8oz
- Contrast stitching
- 17" L x 15" W

SIZES: One size

COLOURS: Indigo Denim, Black Denim



Black denim

Indigo denim

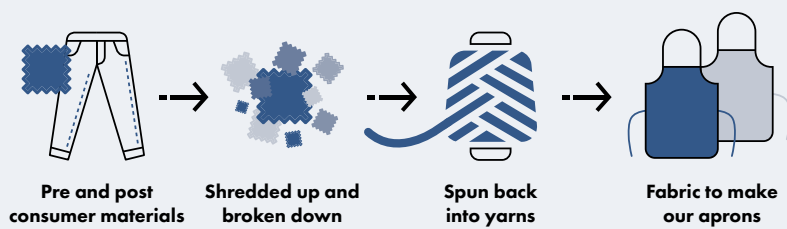


'REGENERATE' APRON

RP122 'REGENERATE' RECYCLED BIB APRON

- Contrast stitching
 - Slanted side pockets with contrast trim
 - Adjustable knotted neckband
 - Cotton made from waste denim
 - 33.8" L x 28.3" W
- SIZES: One size
COLOURS: Indigo Denim, Black Denim, Grey Denim, Natural
- Indigo Denim: 58% Recycled Cotton, 36% Recycled Polyester, 6% Recycled Viscose. 8.1oz
 - Black Denim: 53% Recycled Cotton, 41% Recycled Polyester, 6% Recycled Viscose. 8.1oz
 - Grey Denim: 55% Recycled Cotton, 36% Recycled Polyester, 9% Recycled Viscose. 8.1oz
 - Natural: 44% Recycled Cotton, 37% Recycled Polyester, 19% Recycled Viscose. 8.1oz

WOVEN ON HAND LOOMS



'DOMAIN' CONTRAST DENIM

RP127 'DOMAIN' CONTRAST DENIM BIB APRON

- 70% Cotton, 30% Polyester - 8oz
- 34" L x 28" W
- 14" wide centre pocket with reverse contrast trim
- Combined pen pocket
- Metal eyelets secure 39" contrast fabric ties
- Neckband with gun metal buckle fastening for height adjustment

SIZES: One size

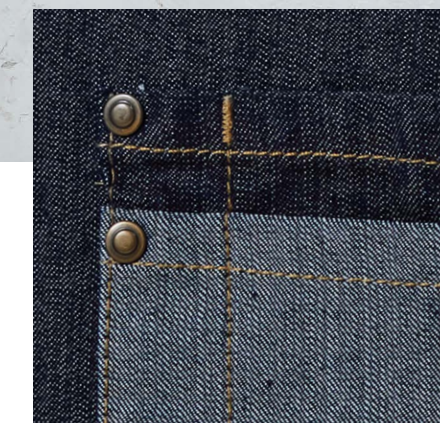
COLOURS: Indigo Denim, Black Denim

RP128 'DOMAIN' CONTRAST DENIM WAIST APRON

- 70% Cotton, 30% Polyester - 8oz
- 20" L x 28" W
- 14" wide centre pocket with reverse contrast trim
- Combined pen pocket
- Metal eyelets secure 39" contrast fabric ties

SIZES: One size

COLOURS: Indigo Denim, Black Denim



Contrast pocket with rivet detail



Adjustable buckle



Black denim

Indigo denim

Black denim

Indigo denim



CROSS BACK 'BARISTA'



RP129 CROSS BACK 'BARISTA' BIB APRON

- 100% Cotton Canvas - 9.4oz
Denims - 70% Cotton, 30% Polyester - 8.1oz
- Supplied with self-fabric straps
- Front centre pocket with built-in pen slot
- Metal eyelets to the waist to facilitate ties

SIZES: One size

COLOURS: Black, Indigo Denim,
Khaki, Black Denim



Cotton Rich



Global Recycled
Standard
Certified by Control Union
CB/CUC1119398

ARTISAN STYLING



RP123 'ESPRESSO' BIB APRON

- 65% Recycled Polyester, 35% Cotton - 6oz
- 100% Polyurethane Trim
- Faux leather trim with two large eyelets
- Adjustable neckband with press studs
- Two bellow-style pockets: 6.5" L x 10" W
- 32" L x 28" W

SIZES: One size

COLOURS: Black/Black, Black/Brown,
Navy/Brown, Khaki/Brown



Global Recycled
Standard
Certified by Control Union
CB/CUC1119398



THE ARTISAN
COLLECTION BY
REPRIME

'CHINO'
BIB APRON

RP132



**RP132 COTTON
'CHINO' BIB APRON**

- 100% Cotton Twill - 6.9oz
- 34" L x 28" W
- 'Chino' style stitched pockets with rivets
- Top centre pocket
- Neckband with buckle and adjustable snap button fastening

SIZES: One size

COLOURS: Black, Navy, Steel, Khaki



Colton Rich



'ANNEX'
OXFORD
BIB APRON



**RP144 'ANNEX'
OXFORD BIB APRON**

- 100% Cotton Yarn Dyed Oxford Weave - 6.9oz
- 34" L x 28" W
- Faux leather neckband with height adjusting buckle and rivet detail.
- Faux leather cloth holder and side tabs with rivet detail.
- Center pocket

SIZES: One size



100% Cotton



RP144



'CALIBRE' COTTON CANVAS APRONS



Oversized eyelet for neckband

Self fabric ties



RP137



RP131

RP131 'CALIBRE' HEAVY COTTON CANVAS WAIST APRON

- 100% Heavy Cotton Canvas - 9.4oz
- 20" L x 28" W
- Heavyweight and durable
- Metal eyelets secure 35" self fabric waist ties

SIZES: One size

COLOURS: Black, Navy, Dark Grey, Silver, Natural, Khaki, Burgundy, Red



RP130

RP130 'CALIBRE' HEAVY COTTON CANVAS BIB APRON

- 100% Heavy Cotton Canvas - 9.4oz
- 34" L x 28" W
- Heavyweight and durable
- Large metal eyelet detail for adjustable neckband knot
- Metal eyelets secure 35" self fabric waist ties

SIZES: One size

COLOURS: Black, Navy, Dark Grey, Silver, Natural, Khaki, Burgundy, Red



RP137

RP137 'CALIBRE' HEAVY COTTON CANVAS POCKET APRON

- 100% Heavy Cotton Canvas - 9.4oz
- 34" L x 28" W
- Heavyweight and durable
- Large metal eyelet detail for adjustable neckband knot
- Four pocket compartments
- Metal eyelets secure 35" self fabric waist ties

SIZES: One size

COLOURS: Black, Navy, Dark Grey, Silver, Natural, Khaki, Burgundy, Red

Artwork for illustrative purposes.
Supplied blank.



100% Cotton

CHEF'S RECYCLED SHORT SLEEVE SHIRT



Double pen pocket



Tab to secure apron neckband



Contrast inner collar



RP904 'CHEF'S RECYCLED SHORT SLEEVE SHIRT

- 65% Recycled Polyester, 35% Cotton Twill
- Mandarin collar
- Press stud fastening
- Contrast coloured inner neckband
- Chest pocket and upper left sleeve pen pocket

SIZES: S, M, L, XL, 2XL, 3XL

COLOURS: Black, White



ZIPPED CHEF'S JACKET

RP906 CHEF'S ZIP-CLOSE SHORT SLEEVE COAT

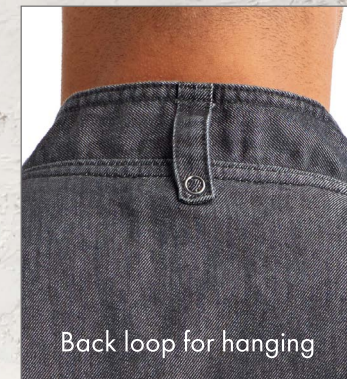
- White, 65% Polyester, 35% Cotton Twill - 5.1oz
- Denim, 60% Cotton, 40% Recycled Polyester Twill - 6.8oz
- Double pen pocket on the left sleeve
- Zip through fastening
- Mandarin collar
- Under arm fabric variances

SIZES: XS, S, M, L, XL, 2XL

COLOURS: Black Denim, White



RP906



Back loop for hanging



Zip detail



Black denim



White



Cotton Rich



NEW

RP904

**CHEFSWEAR
WITH NEW RECYCLED STYLES**

THE ARTISAN
COLLECTION BY
REPRIME

CHEF'S RECYCLED

CHEF'S COATS



**RP656 SHORT-SLEEVE
RECYCLED CHEF'S COAT**



**RP657 LONG-SLEEVE
RECYCLED CHEF'S COAT**

- 65% Recycled Polyester, 35% Cotton - 5.8 oz
- Mandarin collar
- Ten-button hole wrap over fastening
- High quality, long life resin buttons
- Pen pocket on left sleeve
- Length 29.9"

• SIZES: XS - 4XL

COLOURS: Black, White



RP657

RP656

RP653

RP653 CHEF'S RECYCLED BEANIE

- 65% Recycled Polyester, 35% cotton - 5.8 oz
- Flat top
- Elastic back

SIZES: One size
COLOURS: Black, White

White Black

Global Recycled Standard
Certified 65% Recycled Polyester
Recycled from Consumer Polyester
Certified by Control Union
© 2022 REPRIME

DENIM

STUDDED CHEF'S COAT



RP660 DENIM CHEF'S COAT

- 60% Cotton, 40% Polyester - 6.8oz
- 34" L x 28" W
- Unisex styling
- Soft and breathable
- Mandarin collar stand
- Long sleeves
- Cross-over front fastening
- Ten press stud front fasteners



SIZES: XS, S, M, L, XL, 2XL, 3XL
COLOURS: Black Denim, Grey Denim, Indigo Denim



CHEF'S PANTS



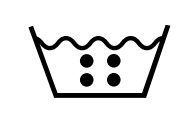
RP553 UNISEX 'ESSENTIAL' CHEF'S PANTS

- Pull-on chef's pants
 - 65% Polyester, 35% Cotton Twill - 6 oz
 - Elasticated waist with drawstring
 - Two swing pockets to the sides
 - Easycare & high temperature wash
- SIZES: XS, S, M, L, XL, 2XL, 3XL, 4XL
COLOUR: Black



RP554 CHEF'S 'SELECT' SLIM LEG PANTS

- Pull-on chef's pants
 - 65% Recycled Polyester, 35% Cotton Twill - 6 oz
 - Elasticated waist with drawstring
 - Zip fly fastening
 - Handy pocket on the right leg, left rear patch pocket
 - Easycare & high temperature wash
- SIZES: XS, S, M, L, XL, 2XL
COLOUR: Black



GINGHAM

MICROCHECK

RP221 MEN'S MICROCHECK GINGHAM SHORT SLEEVE COTTON SHIRT

- 100% Cotton - 3.4oz
- Short sleeves
- Semi fitted styling
- Gingham Microcheck pattern
- Soft collar styling

RP321 LADIES' MICROCHECK GINGHAM SHORT SLEEVE COTTON SHIRT

- 100% Cotton - 3.4oz
- Short sleeves
- Bust and back darts for feminine fit
- Gingham Microcheck pattern
- Soft collar styling
- Curved hem line

RP220 MEN'S MICROCHECK GINGHAM LONG SLEEVE COTTON SHIRT

- 100% Cotton - 3.4oz
- Long sleeves with two button cuff
- Sleeve guard
- Semi fitted styling
- Gingham Microcheck pattern
- Soft collar styling

RP320 LADIES' MICROCHECK GINGHAM LONG SLEEVE COTTON SHIRT

- 100% Cotton - 3.4oz
- Long sleeves with two button cuff
- Sleeve guard
- Bust and back darts for feminine fit
- Gingham Microcheck pattern
- Soft collar styling
- Curved hem line



Modern Fit

100% Cotton



SIZES: XS, S, M, L, XL, 2XL, 3XL

COLOURS: Navy/White, Light Blue/White, Black/White, Red/White



RP221

RP321



'MULLIGAN' CHECK



RP250 MENS 'MULLIGAN' CHECK LONG SLEEVE SHIRT

- 100% Cotton Yarn Dyed Poplin - 3.4oz
- Semi fitted styling
- Contrast checked pattern
- Narrow soft collar
- Roll sleeve option with button and tab fastening on upper arm
- Single button cuff and sleeve guard for long sleeve styling
- Curved hem line

SIZES: XS, S, M, L, XL, 2XL, 3XL

COLOURS: Red/Navy, Camel/Navy, Steel/Black, White/Navy

RP350 LADIES' 'MULLIGAN' CHECK LONG SLEEVE SHIRT

- 100% Cotton Yarn Dyed Poplin - 3.4oz
- Semi fitted styling
- Bust and back darts for feminine fit
- Contrast checked pattern
- Narrow soft collar
- Roll sleeve option with button and tab fastening on upper arm
- Single button cuff and sleeve guard for long sleeve styling
- Curved hem line

SIZES: XS, S, M, L, XL, 2XL

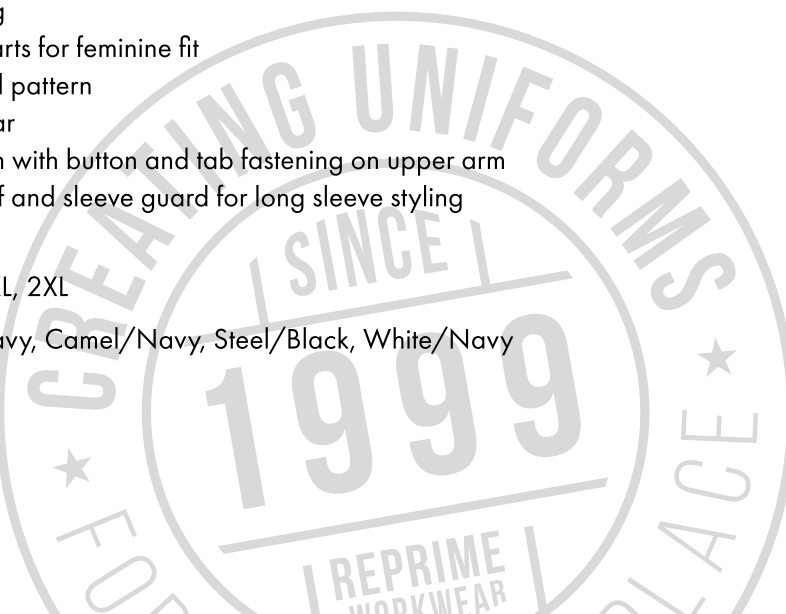
COLOURS: Red/Navy, Camel/Navy, Steel/Black, White/Navy



Check out how our pieces can be transformed for a smokehouse uniform. Mixed and matched to create front-of-house attire and coordinating chefswear that can handle the heat. Our extensive range combines functionality and durability, without compromising on style and branding!

- OUTFIT 1: RP321 Ladies' Microcheck Gingham Short Sleeve Cotton Shirt, page 32, Styled With RP123 'Espresso' Bib Apron, page 19.
 OUTFIT 2: RP350 Ladies' Mulligan' Check long Sleeve Cotton Shirt, page 34, Styled With RP126 Jean Stitch Bib Apron, page 15.
 OUTFIT 3: RP220 Men's Microcheck Gingham Short Sleeve Cotton Shirt, page 32, Styled With RP129 Cross back 'Barista' Bib Apron, page 18.
 OUTFIT 4: RP904 'Recyclight' Chef's Shirt, page 24, Styled With RP150 'Colours' Bib Apron, page 13.

Artwork for illustrative purposes. Supplied blank.



THE ARTISAN COLLECTION BY REPRIME

APRONS

Functional and Stylish

SHIRTS

Tailored to Your Look

CHEFSWEAR

Ready for Any Kitchen



Available from
alphabroder

HOW TO BUY



www.artisanbyreprime.com



AVAILABLE
FROM



alphabroder

www.alphabroder.com

