



## RP320 Women's Long Sleeve Gingham Microcheck Shirt

### Description

This charming Gingham patterned shirt offers a more casual approach with soft collar styling, but the buttoned cuffs ensures that this is still a smart choice for business professionals. Made with 100% cotton for a soft and comfortable shirt that is available in four popular colourways.

### Product Features:

- Soft collar styling
- Double buttons on cuff
- Bust and back darts
- Curved hem

### Available In:

XS, S, M, L, XL, 2XL, 3XL

### Certifications:



### Colours:

| Colour            | Pantone    | C       | M  | Y   | K  |     |
|-------------------|------------|---------|----|-----|----|-----|
| Black/ White      | Black      | Black c | 0  | 0   | 0  | 100 |
|                   | White      | White   | 0  | 0   | 0  | 0   |
| Light Blue/ White | Light Blue | 2707c   | 20 | 6   | 0  | 0   |
|                   | White      | White   | 0  | 0   | 0  | 0   |
| Navy/ White       | Navy       | 533c    | 95 | 72  | 15 | 67  |
|                   | White      | White   | 0  | 0   | 0  | 0   |
| Red/ White        | Red        | 201c    | 7  | 100 | 68 | 32  |
|                   | White      | White   | 0  | 0   | 0  | 0   |

### Fabric:

100% Cotton, Yarn Dyed Poplin, 3.4oz.

### Decoration:

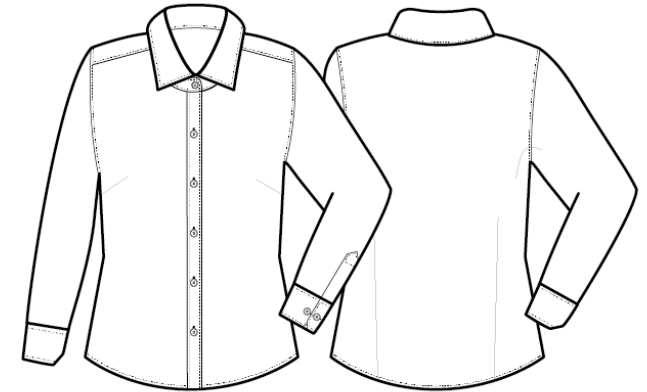
Screen Print, Transfer Print, Embroidery

### Country of Origin:

Egypt

### Commodity Code:

6206.30.30.41



### Fabric Features:



### Wash Care:



### Carton Information:

| Sizes     | Carton | Pack | SKU's | Carton Weight (Pounds) | Carton Dimentions |
|-----------|--------|------|-------|------------------------|-------------------|
| All Sizes | 24     | 6    | 28    | 17.9                   | 23.6"x14.1"x7.4"  |

### Garment Sizes:

| Size           | 8  | 10 | 12  | 14  | 16  | 18  | 20  |
|----------------|----|----|-----|-----|-----|-----|-----|
| Bust to fit"   | 33 | 35 | 37  | 39  | 41  | 43  | 45  |
| Bust to fit cm | 84 | 89 | 94  | 99  | 104 | 109 | 114 |
| Bust actual cm | 92 | 97 | 102 | 107 | 112 | 117 | 122 |
| Coll size      | XS | S  | M   | L   | XL  | 2XL | 3XL |
| Back length cm | 65 | 66 | 67  | 68  | 69  | 70  | 71  |